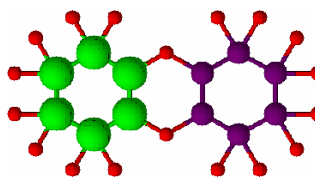


S2485NN Gold Line**Typical analysis**

Arsenic (As)	0.0005%
Chloride (Cl)	0.1%
Iron (Fe)	0.005%
Lead (Pb)	0.005%
Na ₄ P ₂ O ₇	15%
NaPO ₃	85%
Sulphate (SO ₄)	0.25%
Total P ₂ O ₅	66%
Water-insoluble matter	0.02%

**Packaging**

500g white plastic jar

Physical properties, composition and data

Chemical formula	(NaPO ₃) _n
Synonym	Graham's salt; Sodium metaphosphate; Sodium polyphosphate; Sodium polymetaphosphate
Chemical group	Phosphates
Atomic weight	613.20
Appearance	White crystals or powder
Solubility	Soluble in water
Melting point	682°C
Density (g/ml)	2.5
pH (aqueous solution)	5.7 - 7.5

Laboratory preparation, applications and practices

Laboratory preparation	From food-grade phosphoric acid and commercial soda ash by a thermal process
Usage	Analytical reagent

Storage and handling information

Disposal methods	3
------------------	---

Transport regulations

Tariff code	2835.39.30
-------------	------------

