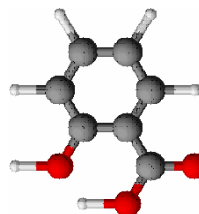


S2280HH Gold Line**Typical analysis**

Assay (HPLC)	min 99%
Chloride (Cl)	0.01%
Iron (Fe)	0.0002%
Lead (Pb)	0.002%
Loss on drying	0.5%
Sulphate (SO ₄)	0.02%
Sulphated ash	0.1%

Packaging

500g white plastic jar

**Physical properties, composition and data**

Chemical formula	(H) ₂ C ₆ H ₄ (COOH) or C ₇ H ₆ O ₃
Synonym	2-Hydroxybenzoic acid; o-Hydroxybenzoic acid
Chemical group	Phenols
Occurrence in nature	Occurs in the form of esters in wintergreen leaves and the bark of sweet birch
Atomic weight	138.12
Appearance	White crystals or crystalline powder
Solubility	Soluble in water, ethanol, acetone, chloroform, ether, benzene, oil turpentine, glycerol, fats and iodine
Melting point	158 - 161°C
Boiling point	211°C
Flash point	>100°C
Ignition point	>150°C
Density (g/ml)	1.443
pH (aqueous solution)	3
Incompatible substances	Iron salts, spirit nitrous ether, lead acetate, iodine
Hazardous material	Harmful

Laboratory preparation, applications and practices

Laboratory preparation	Made synthetically by heating sodium phenolate with carbon dioxide under pressure and acidifying the sodium salt thus formed
Usage	Analytical reagent

Storage and handling information

Storage	Store separated from incompatible substances
Safety phrases	37
Risk phrases	22
Disposal methods	18
Caution	Dust forms an explosive mixture in air

Transport regulations

Tariff code	2918.21.00
-------------	------------

