

P2200FH Gold Line**Typical analysis**

Assay (GLC)	99%
Chloride (Cl)	0.005%
Residue on evaporation	0.005%
Water (H ₂ O)	0.2%

Packaging

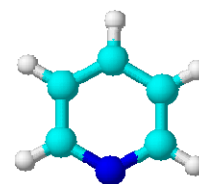
500ml amber glass bottle
2.5l amber glass bottle

P2201FH Platinum Line**Warranty certificate**

Assay (GLC)	min 99.5%
Ammonia (NH ₃)	0.001%
Chloride (Cl)	0.001%
Copper (Cu)	0.0005%
Residue on evaporation	0.002%
Sulphate (SO ₄)	0.001%
Water (H ₂ O)	0.1%
Water-soluble matter	to pass test

Packaging

500ml amber glass bottle
2.5l amber glass bottle

**Physical properties, composition and data**

Chemical formula	N:CHCH:CHCH:CH or CH(CHCH) ₂ N or C ₅ H ₅ N
Occurrence in nature	Constituent of coal tar
Atomic weight	79.10
Chemical group	Aromatic compounds
Weight per litre	0.98kg
Appearance	Colourless to slightly yellow liquid
Odour	Characteristic, disagreeable odour
Miscibility	Miscible with water, acetone, benzene, ethanol, ether, petroleum ether, fatty oils and many other organic liquids
Melting point	-41.6°C
Boiling point	113.5 - 116.5°C
Flash point	17°C
Density (g/ml)	0.9827
pH (aqueous solution)	8.5
Other information	Deteriorates by natural causes
Hazardous material	Flammable and harmful

Laboratory preparation, applications and practices

Usage	Analytical reagent. Solvent
Filter paper	Filtech no: 0222, 0225, 1839

Storage and handling information

Storage	Store in a cool, dry, fireproof place separated from oxidants
Safety phrases	26-28
Risk phrases	11-20/21/22
Disposal methods	14

Transport regulations

Tariff code	2933.31.10
Hazardous class	3
Packing group	II
UN number	1282
ERG number	129
ECB number	203-809-9

