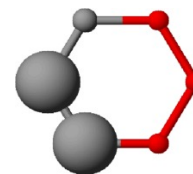


P2010NN	Gold Line
anhydrous	
Typical analysis	
Assay	98%
Chloride (Cl)	0.03%
Iron (Fe)	0.002%
Loss on drying	2%
Sulphate (SO ₄)	0.03%

P2011NN	Platinum Line
anhydrous	
Warranty certificate	
Assay (Alkalimetric)	min 99.5%
Calcium (Ca)	0.005%
Chloride (Cl)	0.005%
Iron (Fe)	0.0005%
Lead (Pb)	0.0005%
Loss on drying	1%
Magnesium (Mg)	0.002%
Phosphate (PO ₄)	0.001%
Sodium (Na)	0.02%
Total nitrogen (N)	0.001%
Total sulphur (S)	0.005%
Water-insoluble matter	0.01%



Packaging
500g white plastic jar

Packaging
500g white plastic jar

Physical properties, composition, and data	
Chemical formula	K ₂ CO ₃
Synonym	Pearl ash; Potash; Salt of tartar
Chemical group	Carbonates
Atomic weight	138.21
Appearance	White granules or crystalline powder
Solubility	Soluble in water
Melting point	891 °C
Density (g/ml)	2.428
Boiling point	Decomposes
pH (aqueous solution)	11.5 - 12.5

Laboratory preparation, applications and practices	
Usage	Analytical reagent. Reagent for the decomposition of silicates by fusion

Storage and handling information	
Storage	Store in a cool dry place
Safety phrases	22-26
Risk phrases	22-36
Disposal methods	3

Transport regulations	
Tariff code	2836.40.00
ECB number	209-529-3

