

N1632NN	Gold Line
powder	
<b>Typical analysis</b>	
C.I.	50040
Colour change	bluish- red to orange yellow
Loss on drying	<5%
pH sensitivity	passes test

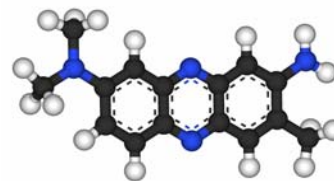
**Packaging**

25g black plastic jar

N1633NN	Gold Line
indicator solution	
<b>Typical analysis</b>	
Colour change	bluish- red to orange yellow
Colour index	50040

**Packaging**

500ml black plastic bottle

**Physical properties, composition and data**

Chemical formula	$C_{15}H_{17}ClN_4$
Synonym	Aminodimethyl-aminotoluaminozine hydrochloride; Basic red; Neutral red chloride; Nuclear fast red; Toluylene rec
Chemical group	Stains
Atomic weight	288.78
Appearance	Dark green powder or solution
Solubility/miscibility	Soluble in water, ethanol and ethylene glyco
Melting point	290 °C
pH (aqueous solution)	6.8 - 8.0

**Laboratory preparation, applications and practices**

Laboratory preparation	N,N-dimethyl-p-nitrosaniline hydrochloride and toluene-2,4-diamine
Usage	As indicator for alkalinity of water, urea, nitrite and as a biological stain
Filter paper	Filtech no: 0222, 0225, 1839

**Storage and handling information**

Risk phrases	20/21/22
Disposal methods	16

**Transport regulations**

Tariff code	3204.13.00
-------------	------------

