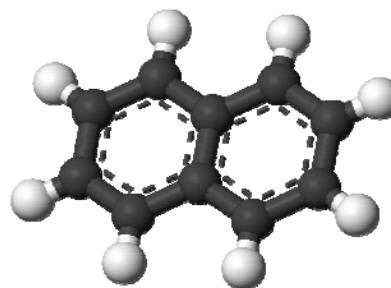


N1615NN		Silver Line
<b>Typical analysis</b>		
Assay	min 99.5%	
Acidity (Naphthoic acid)	0.02%	
Alkalinity (NH <sub>3</sub> )	0.0002%	
Iron (Fe)	0.001%	
Lead (Pb)	0.001%	
Moisture	0.02%	
Residue on ignition	0.01%	
Total chlorine	0.001%	
Total sulphur	0.01%	

**Packaging**

500g white plastic jar

**Physical properties, composition and data**

Chemical formula	C <sub>10</sub> H <sub>8</sub>
Synonym	Naphalin; Naphthene; Tar camphor
Chemical group	Hydrocarbons
Atomic weight	128.16
Appearance	White crystals, flakes or white balls
Odour	Tar-like odour
Solubility	Soluble in methanol, ethanol, benzene, toluene, olive oil, turpentine, chloroform, carbon tetrachloride, carbon disulphide ether hydronaphthalenes, fixed and volatile oils
Melting point	79.2°C - 81.2°C
Boiling point	217.96°C
Flash point	79°C
Auto ignition temperature	567°C
Density (g/ml)	1.162

**Laboratory preparation, applications and practices**

Usage Analytical and synthesis reagent

**Storage and handling information**

Storage	Store in a fireproof place
Safety phrases	36/37-60-61
Risk phrases	22-50/53
Disposal methods	16

**Transport regulations**

Tariff code	2902.90.10
Hazardous class	4.1
Packing group	II
UN number	1344
ERG number	133

