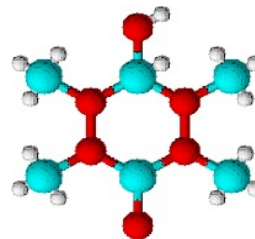


M1425NN	Platinum Line
<b>Warranty certificate</b>	
Assay (Oxidimetric)	min 98.5%
Acidity (CH <sub>3</sub> COOH)	0.005%
Arsenic (As)	0.0001%
Chloride (Cl)	0.005%
Iron (Fe)	0.001%
Lead (Pb)	0.0005%
Residue on ignition	0.01%
Total sugars (Glucose)	0.3%
Specific optical rotation	+22.3 to +24°C
Sulphate (SO <sub>4</sub> )	0.01%
Water-insoluble matter	0.01%

**Packaging**

250g white plastic bottle

**Physical properties, composition and data**

Chemical formula	C <sub>6</sub> H <sub>8</sub> (OH) <sub>6</sub>
Chemical group	Polyols
Synonym	Cordycepic acid; Manna sugar; Mannite; Mannitol
Occurrence in nature	Widespread in plants and plant exudates, obtained from manna and seaweeds
Atomic weight	182.17
Appearance	White crystalline powder or granules
Solubility	Soluble in water, ethanol, pyridine, aniline, aqueous solutions of alkalis
Melting point	166 - 170°C
Boiling point	290 - 295°C
Density (g/ml)	1.52
pH (aqueous solution)	5 - 7

**Laboratory preparation, applications and practices**

Laboratory preparation	Electrolytic reduction of glucose
Usage	Analytical reagent. Food industry as anti-caking, free-flowing and flavouring agent. Release agent. Stabiliser and thickener. Boron determination

**Storage and handling information**

Disposal methods	16
------------------	----

**Transport regulations**

Tariff code	2905.43.00
-------------	------------

