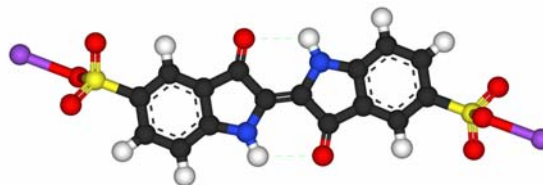


I1162NN Gold Line**Typical analysis**

Assay	89.5 - 90.5%
Arsenic (As)	0.0003%
Cadmium (Cd)	0.0001%
Colour Index	73015
Colour change	blue to yellow
Ether extractable matter	<0.2%
Free aromatic amines	0.01%
Lead (Pb)	0.001%
Loss on drying	6%
Mercury (Hg)	0.0001%
Synthetic intermediates	0.5%
Water-insoluble matter	0.2%

**Packaging**

25g black plastic jar

Physical properties, composition and data

Chemical formula	$C_{16}H_8N_2Na_2O_8S_2$
Synonym	Acid blue 74; di-Sodium 5,5'-indigotin disulphonate; Food blue 1; Sodium indigotine
Chemical group	pH indicators
Atomic weight	466.36
Solubility	Soluble in water and slightly soluble in ethanol
Appearance	Dark blue or purple powder with a coppery lustre
Density (g/ml)	0.955 - 0.965
pH (aqueous solution)	5.3
Other information	Light sensitive

Laboratory preparation, applications and practices

Usage Analytical reagent. Indicator for determination of dibromamine T. As a dye. In milk testing. Reagent for detection of nitrates and chlorate

Storage and handling information

Storage/handling	Store separated from light
Safety phrases	22-26-36/37/39-45
Risk phrases	20/21/22-36/37/38
Disposal methods	16

Transport regulations

Tariff code 3204.12.00

