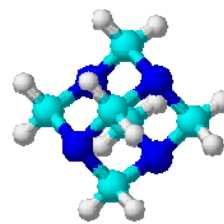


**H1088NN Gold Line****Typical analysis**

Assay	min 98%
Chloride (Cl)	0.005%
Lead (Pb)	0.001%
Residue on ignition	0.05%
Sulphate (SO <sub>4</sub> )	0.01%

**Packaging**

500g white plastic jar

**Physical properties, composition and data**

Chemical formula	C <sub>6</sub> H <sub>12</sub> N <sub>4</sub> or (CH <sub>2</sub> ) <sub>6</sub> N <sub>4</sub> or C <sub>6</sub> H <sub>12</sub> N <sub>4</sub>
Synonym	Hexamethylenamine; Hexamethylenetetramine; Methenamine; Aminoform
Chemical group	Nitrogen heterocycles
Atomic weight	140.19
Appearance	White crystalline or colourless crystals, granules or powder
Solubility	Soluble in water, alcohol, chloroform. Slightly soluble in ether
Melting point	Sublimes without melting at 285 - 295 °C with partial decomposition
Boiling point	Decomposes
Flash point	250 °C
Density (g/ml)	1.33
pH (aqueous solution)	8.4

**Laboratory preparation, applications and practices**

Laboratory preparation	Action of ammonia on formaldehyde
Usage	Analytical and synthesis reagent

**Storage and handling information**

Safety phrases	16-22-24-37
Risk phrases	11-42/43
Disposal methods	16

**Transport regulations**

Tariff code	2933.90.10
Hazardous class	4.1
Packing group	III
UN number	1328

