

H1050NN Gold Line

Typical analysis

Assay	>95%
Colour Index	75290
Loss on drying	<10%
Residue on ignition	1%

Packaging

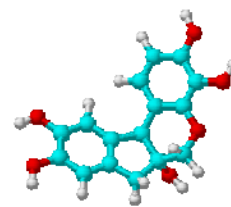
25g black plastic jar
100g black plastic jar

H1051FF Gold Line

solution to Gill

Packaging

100ml amber glass bottle
2.5l black plastic bottle



Physical properties, composition and data

Chemical formula-powder only	$C_{16}H_{14}O_6 \cdot xH_2O$
Synonym	Hematoxylin; Hematoxyline; Hydroxybrazilin; Hydroxybrasalin; Natural black 1
Chemical group	Stains
Atomic weight	302.29
Appearance	White to slightly yellow crystals turning red in light. Solution: Reddish purple
Solubility/miscibility	Soluble in hot water, hot ethanol, borax, glycerol and alkali hydroxide solution:
Melting point	100 - 140°C
Boiling point	Decomposes
Density (g/ml)	Bulk: 500 kg/m ³
pH (aqueous solution)	5.0 yellow - 7.2 red
Other information	Deteriorates by natural causes
Hazardous material	Solution: flammable

Laboratory preparation, applications and practices

Laboratory preparation	Analytical reagent. Indicator for complexometric titrations. Determination of aluminium in soil extract Nuclear stains. Papanicolau diagnostic procedures Filtech no: 0222, 0225, 1839
Filter paper	

Storage and handling information

Storage	Store separated from light
Safety phrases	22-24/25
Risk phrases	25-45
Disposal methods	16

Transport regulations

Tariff code	3203.00.19
-------------	------------

