

**G0965NN Gold Line**

powder  
Loss on drying (110°) <10%

**Packaging**

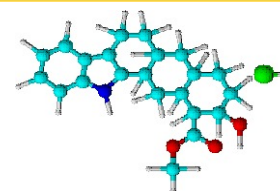
25g black plastic jar  
50g black plastic jar

**G0966FT Gold Line**

indicator solution

**Packaging**

500ml black plastic bottle



**Physical properties, composition and data**

Chemical formula	C <sub>14</sub> H <sub>14</sub> ClN <sub>3</sub> S
Synonym	Azur-eosin-methylene blue dye according to Giemsa
Chemical group	Stains
Atomic weight	291.80
Solution mixture	Giemsa stain powder and Azur II
Appearance	Blackish dark-green powder, brownish-orange liquid
Solubility/miscibility	Soluble in/miscible with methanol, ethanol
Melting point	300°C
Density (g/ml)	Bulk: 520 kg/m <sup>3</sup>
pH (aqueous solution)	6.1 - 7.0
Hazardous material	Solution: flammable

**Laboratory preparation, applications and practices**

Usage Microscopy, hematology, blood smears and protozoa staining

**Storage and handling information**

Safety phrases	7-16-24-37-45
Risk phrases	1-23/24/25-39
Disposal methods	3

**Transport regulations**

Tariff code	3204.19.00
Hazardous class	Solution: 3
Packing group	Solution: 1
UN number	Solution: 1922
ERG number	127

