

G0963NN Gold Line

powder

Typical analysis

Assay	100%
Arsenic (As)	0.0004%
Colour Index	42535
Lead (Pb)	0.002%
Loss on drying (100°C)	<5%
Sulphated ash	1.20%

Packaging

25g black plastic jar
100g black plastic jar

G0964NN Gold Line

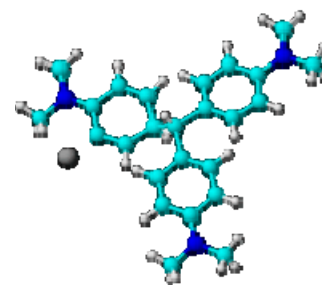
indicator solution

Typical analysis

Colour Index	42535
--------------	-------

Packaging

500ml black plastic bottle

**Physical properties, composition and data**

Chemical formula	$C_{21}H_{30}N_3$
Chemical group	Stains
Synonym	Aniline violet, Basic violet 3, Crystal violet, Hexamethylenepararosaniline, Hexamethylee-p-rostanilinium chloride, Methyl rosaniline chloride, Methyl violet
Atomic weight	407.99
Appearance	Dark green powder or liquid. Greenish glistening pieces with metallic luster
Solubility	Soluble in water and chloroform
Melting point	189 - 194°C
Boiling point	170°C
Flash point	75°C
Ignition point	490°C
Density (g/ml)	Bulk: 220 - 400 kg/m ³
pH (aqueous solution)	2.5 - 3.5

Laboratory preparation, applications and practices

Usage	Dye, biological stain, solution as indicator
-------	--

Storage and handling information

Storage/handling	Store separated from light
Safety phrases	22-26-36/37/39-61
Risk phrases	22-40-41-50/53
Disposal methods	3

Transport regulations

Tariff code	3204.13.00
-------------	------------

