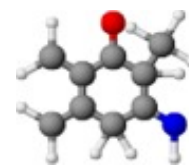


D0700NN Gold Line**Typical analysis**

Assay	min 99%
Alcohol-insoluble matter	0.01%
Chloride (Cl)	0.005%
Iron (Fe)	0.001%
Indole base	0.002%
Lead (Pb)	0.001%
Residue on ignition	0.05%
Sulphur (S)	0.002%

**Packaging**

25g black plastic jar
 100g black plastic jar
 250g black plastic jar
 500g black plastic jar

Physical properties, composition, and data

Chemical formula	(CH ₃) ₂ N.C ₆ H ₄ CHO or C ₇ H ₁₁ NO
Chemical group	Aldehydes
Synonym	4-Dimethylaminobenzenecarbal; p-Dimethyl-aminobenzaldehyde; p-Formyldimethylaniline; Ehrlich's reagent
Atomic weight	149.19
Appearance	Colourless or white crystals normally lemon coloured, may turn pink on exposure to light
Solubility	Slightly soluble in water, soluble in alcohol, ether, chloroform, acetic acid and many other organic solvent:
Melting point	74°C
Boiling point	176 - 177°C
Density (g/ml)	380
Other information	Deteriorates by natural causes

Laboratory preparation, applications and practices

Laboratory preparation	Formulation of dimethylaniline with dimethylformamide
Usage	Analytical reagent, manufacturing dyes

Storage and handling information

Storage/handling	Protect from light
Risk phrases	20/21/22
Disposal methods	16
Caution	Toxic by ingestion

Transport regulations

Tariff code	2922.30.00
-------------	------------

