

2,6-dichlorophenol-indophenol sodium salt

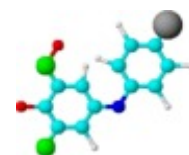
cas 620-45-1

D0676NN Gold Line**Typical analysis**

Assay on dry substance	95%
Foreign dyes	passes test
Loss on drying (120°C)	12%

Packaging

5g black plastic jar

**Physical properties, composition, and data**

Chemical formula	$\text{NaOC}_6\text{H}_4\text{N:C}_6\text{H}_2(\text{Cl}_2)\cdot\text{O}\cdot 2\text{H}_2\text{O}$ or $\text{C}_{12}\text{H}_6\text{Cl}_2\text{NNaO}_2\cdot 2\text{H}_2\text{O}$
Chemical group	Salts
Synonym	Sodium 2,6-dichloroindophenol; Tillman's reagent
Atomic weight	326.09
Appearance	Dark green powder
Solubility	Soluble in water and alcohol
Other information	Combustible

Laboratory preparation, applications and practices

Laboratory preparation	2,6-di-chloro-p-quinone-4-chlorimide and phenol in alkaline solution
Usage	Analytical reagent in the determination of ascorbic acid (vitamin C) which reduces the dye to a colourless hydroxy compound

Storage and handling information

Storage/handling	Store in a cool place
Disposal methods	16

Transport regulations

Tariff code	2925.20.00
ERG number	160
ECB number	210-6404

