

C0564NN Gold Line

Typical analysis

Colour Index	42660
Dye content	approx. 60%

Packaging

25g black plastic jar

Physical properties, composition and data

Chemical formula	$C_{45}H_{44}N_3O_7S_2Na$
Chemical group	Stains
Atomic weight	825.99
Synonym	Azul Coomassie R250; Brilliant blue R
Appearance	Dark violet powder
Mixture	50% methanol, 10% glacial acetic acid

Laboratory preparation, applications and practices

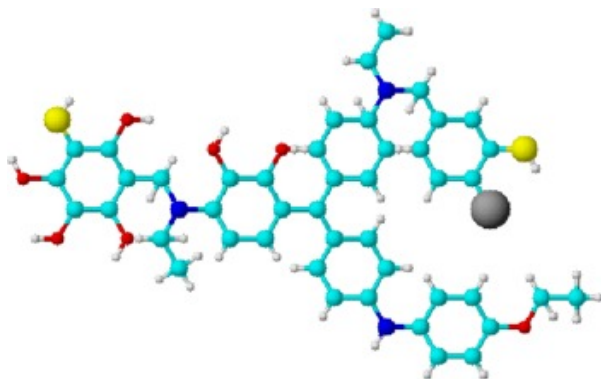
Usage	In microscopy for detection of protein bands following electrophoresis
-------	------------------------------------------------------------------------

Storage and handling information

Storage	Store at room temperature
Risk phrases	20/21/22
Disposal methods	16

Transport regulations

Tariff number	3204.12.00
ECB number	228-060-5



Coomassie Blue Staining Method

Reagents

- * Fixing solution (50% methanol and 10% glacial acetic acid).
- * Staining solution (0.1% Coomassie Brilliant Blue R-250, 50% methanol and 10% glacial acetic acid)
- * De-staining solution (40% methanol and 10% glacial acetic acid)
- * Storage solution (5% glacial acetic acid)

Procedure

- * Fix gel in Fixing solution for 1 hour to overnight with gentle agitation. Change solution once at first 1 hour
- * Stain gel in Staining solution for 20 min with gentle agitation
- * De-stain gel in de-staining solution. Replenish the solution several times