

C0515FI Gold Line**Typical analysis**

Assay	99%
Residue on evaporation	0.02%

Packaging

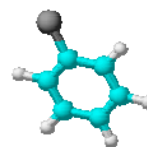
2.5l amber glass bottle

C0516FI Platinum Line**Warranty certificate**

Assay (GC)	min 99%
Residue on evaporation	0.01%
Water (H ₂ O) [Karl Fisher]	0.05%

Packaging

2.5l amber glass bottle

**Physical properties, composition and data**

Chemical formula	C ₆ H ₅ Cl
Synonym	Benzene chloride; Monochlorobenzene; Phenyl chloride
Atomic weight	112.56
Weight per litre	1.10kg
Appearance	Colourless, refractive liquid
Odour	Almond-like odour
Miscibility	Soluble in most organic solvents
Melting point	-45°C
Boiling point	132°C
Flash point	28 - 29.4°C
Ignition point	637°C
Density (g/ml)	1.107
pH (aqueous solution)	Neutral
Other information	Solidifies at -55°C
Hazardous material	Flammable and irritant

Laboratory preparation, applications and practices

Laboratory preparation	Chlorination of benzene in the presence of a catalyst
Usage	Analytical reagent. Solvent
Filter paper	Filtech no: no: 0285, 1803

Storage and handling information

Storage	Store in a fireproof place equipped with mechanical exhausts, separated from oxidants
Safety phrases	24/25-61
Risk phrases	10-20-51/53
Disposal methods	15

Transport regulations

Tariff number	2903.61.00
Hazardous class	3.3
Packing group	III
UN number	1134
ERG number	130

