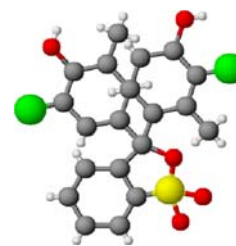


B0259NN	Platinum Line
powder	
Warranty certificate	
Colour change	yellow to purple
Loss on drying	1%
Residue on ignition	0.2%

Packaging	
5g black plastic jar	
25g black plastic jar	

B0260FF	Gold Line
indicator solution	
Typical analysis	
Colour change	yellow to purple

Packaging	
100ml amber glass bottle	



Physical properties, composition and data

Chemical formula	$C_{21}H_{16}Br_2O_5S$
Synonym	5,5'-Dibromo- α -cresolsulphonphthalein
Chemical group	pH indicators
Liquid mixture/solution	Bromocresol green, methylated spirits and water
Atomic weight	540.24
Weight per litre	Solution: 0.979kg
Appearance	Minute, slightly yellow crystals or crystalline powder
Solubility	Soluble in/miscible with alcohol, ether, ethyl acetate, benzene and very slightly in water
Melting point	242°C Solution - 114.1°C
pH (aqueous solution)	Solution: 5.2 - 6.8
Hazardous material	Solution: Flammable

Laboratory preparation, applications and practices

Laboratory preparation	Indicator solution: Dissolve 1g bromocresol purple in 500ml non-coloured meths and dilute with distilled water to make up 2.5l
Usage	Analytical reagent and pH indicator
Filter paper	Filtech no: 0222, 0225, 1839

Storage and handling information

Storage	Store separated from alkalis
Risk phrases	Powder only: 20/21/22
Disposal methods	16

Transport regulations

Tariff code	2934.90.99
Hazardous class	6.1
Packing group	III
UN number	3143
ERG number	127
ECB number	204-087-8

