

**A0038NN Gold Line**

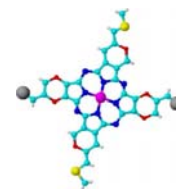
Polysaccharide stain for electrophoresis

**Typical Analysis**

Colour index 74240

**Packaging**

25g black plastic jar



**Physical properties, composition and data**

|                  |  |
|------------------|--|
| Chemical formula | $C_{32}H_{14}CuN_8Na_2O_6S_2$                            |
| Synonym          | Ingrain blue 1   |
| Chemical group   | Polysaccharide   |
| Atomic weight    | 1298.87  |
| Appearance       | Dark blue to greenish-black crystals with metallic sheen |
| Solubility       | Soluble in ethanol and ethylene glycol                   |

**Laboratory preparation, applications and practices**

Usage Polysaccharide stain for electrophoresis. Gelling agent for laboratory fluids, bacterial stain for histiocytes and fibroblasts

**Storage and handling information**

Disposal methods 16

**Transport regulations**

Tariff code 3204.13.00

